



THE GRAND · THE LEAS · FOLKESTONE · CT20 2XL

Telephone 01303 222 222 Email sales@grand-uk.com www.grand-uk.com

Conferences Meetings & Exhibitions



THE LEAS · FOLKESTONE



Breakfast

7am - 11 am every day



What better way to set you up for the day than a Traditional English Breakfast, served to the splendid view of the English Channel.

The Grand Breakfast £8.50

Early Bird Offer Mon to Sat

Two for £12

Charges

Room hire

Per session –Morning, Afternoon or Evening
Green Room, Drawing Room or Music Room
Dining Room, Ballroom

£230 per session / £375 all day
£350 per session / £550 all day

Small meeting rate

Room only, of our choice, set up as requested
Up to 12 delegates £50 per session
Up to 20 delegates £100 per session
(Whole days are two sessions)

Daily Delegate rate – £32

- Room of our choice
- Still or sparkling mineral water
- Two servings of tea or coffee with homemade biscuits
- 2 course lunch

Extras:

- Lunch 3rd course – £5
- Additional serving of tea or coffee with homemade biscuits – £3
- Parking and WiFi are FREE of charge

Other Facilities

Telephones

Local or National calls per minute 15p
Faxes sent £1

Stationary

Flip chart £20
Flip chart pad £15

Photocopies

Black & White
A4 per 10 £1
A3 per 10 £2
Colour
A4 each 20p
A3 each 50p

Electrical

TV £30
DVD £30
Projector £40
Screen £25
PA System £65

Staging

Per section £15
Mobile lighting £70

Conferences Meetings & Events

Your conference, your way



Situated just 40 minutes outside of London by High Speed Link, The Grand is a magnificent building in a superb location, overlooking the English Channel.

The property, itself, was built in the days when an intimate atmosphere and natural acoustics were de rigueur, and quality was the norm.

The Grand's modern facilities have been carefully selected so as to not detract from her period charm.

Whether it is a Meeting for two, large Corporate Conference or an Exhibition numbering in the thousands, The Grand's sizeable premises, experienced staff and superb accommodation will provide the perfect environment for your purpose in an unrivalled setting.

The Grand. Let us take care of everything.

**For more details call 01303 222 222,
email sales@grand-uk.com or visit our
website at www.grand-uk.com**

*“No matter what type of meeting
or event you're planning, you'll
find ample space to suit the
occasion, with all the support
you'll need, here, at The Grand”*

Robert Richardson
GENERAL MANAGER

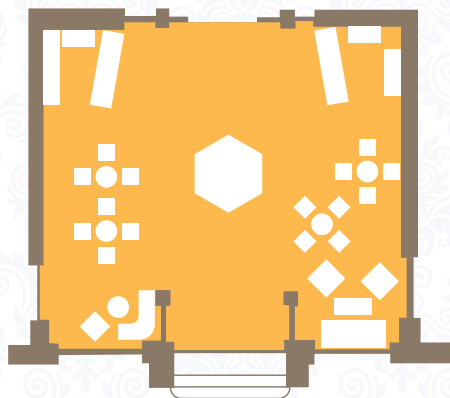


Tudor Room

The fine oak panelling, beautiful cut glass chandelier and comfortable surround make for a relaxed atmosphere where your guests can gather around our discreet bar following your conference, perhaps for drinks. In the winter months you can also warm yourself in front of a crackling open log fire.

Some of the paintings and furnishings are great antiques, dating from 14th to 17th Centuries.

As this room is part of the reception area, no charge is made for its use.



The Palm Court Lunch

Please select one starter, one main course & one dessert:

To Start

*Homemade Leek and Potato Soup
with a Hint of Fresh Thyme (V)*

or

Chicken Liver and Pork Parfait

or

Warm Sun Dried Tomato and Goats Cheese Tartlet (V)

Main Courses

*Pan Fried Breast of Chicken
with a White Wine & Tarragon Sauce*

or

*Grilled Fillet of Pangasius (Vietnamese River Cobbler)
with Tomato and Green Pepper Salsa*

or

Roasted Loin of Pork, Crackling and Apple Sauce

or

Brie & Beetroot Tartlet (V)

All served with Chef's choice of Fresh and Local Seasonal Potatoes and Vegetables

Desserts

Mango and Passion Fruit Cheesecake

or

Dark Chocolate Bavaois

or

Classic Lemon Tart

Followed by a complimentary serving of Freshly Brewed Tea & Coffee

Two Courses £15.00

Three Courses £20.00

Two-Course Buffet Lunch

£15

(Please select a Main Course Menu and a Dessert Menu)

Main Course Menu One

*Beef Bourguignon served with Steamed Seasonal Vegetables and Buttered New Potatoes
Brie & Beetroot Tartlet (V) served with House Mixed Salad*

Main Course Menu Two

*Moroccan Lamb served with Basmati Rice and a Tomato & Pesto Salad
Grilled Halloumi Cheese with Vegetable Cous Cous (V)*

Dessert Menu

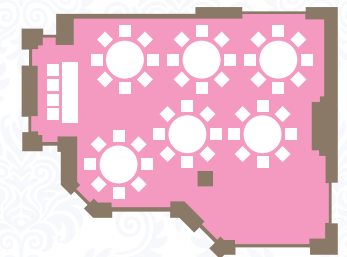
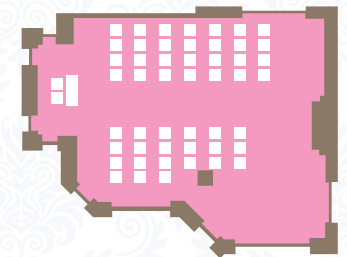
*Lemon Meringue Tart
Dark chocolate Bavaois
Fresh Fruit Salad
Ice Cream Selection*



Drawing Room

A charmingly graceful room and one of our more popular conference rooms - the high ceiling and crystal chandeliers give a spacious and airy feel to one of our more intimately sized rooms.

It is typically used for smaller groups from 10 to about 60, and has the advantage of being right next to the Palm Court Restaurant and Tudor Bar where refreshments and meals are available throughout the day overlooking The Leas and the English Channel.



All prices are per person

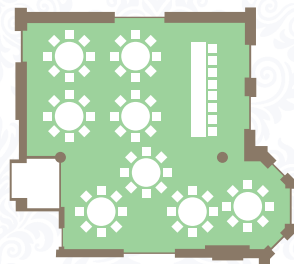
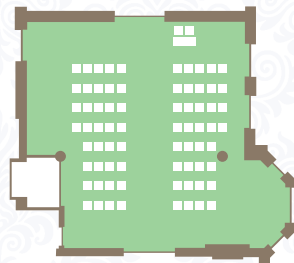


Green Room

The Green Room has a capacity which is comfortable for up to 70 people dining, 120 for seated presentations or 200 for a reception.

A truly beautiful room – the high ceilings and tall windows makes it elegant yet intimate. The Green Room also contains an exclusive private bar which will be opened upon request.

This room has a small balcony ideal for that breath of fresh air with a stunning sea-view backdrop.



Working Lunch (Option One)

£4.75

Freshly made Sandwiches served on brown and white bread crammed with the following fillings and served with potato crisps:

Tuna and Sweet Corn Mayonnaise, Ham and Juicy Tomato, Egg Mayonnaise with Chive, Mildly Curried Chicken

Working Lunch (Option Two)

£8.00

A selection of freshly made Open Sandwiches made with Traditional Continental Breads, topped with the following fillings and complemented with Sensational Wraps and served with potato crisps:

Smoked Salmon and Cream Cheese, Plum Tomato and Mozzarella with Torn Basil Leaf and Cracked Black Pepper, Roast Beef and Horseradish Infused Cream, Moroccan Lamb Wrap, Juicy Tomato and Avocado Wrap

Add fresh fruit skewers or a selection of mini muffins or cakes to your meeting for £1.25 per person

All prices are per person



Our Menus

At The Grand, we have selected a wide range of menus to complement your event; however we are not all of similar tastes and can tailor our menus to your specific requests.

If you would like us to prepare something other than our selected menus please see our events coordinator or head chef to discuss the options.

Tea & Coffee Breaks

Tea/Coffee Break
*Freshly Brewed Tea or Coffee
 and a selection of biscuits*
£3.50

Themed Breaks

Morning Coffee Break
*Freshly Brewed Tea or Coffee and a
 selection of Mini Muffins &
 Homemade Cakes*
£3.50

Breakfast Break
*Freshly Brewed Tea or Coffee and a
 selection of Bacon or Egg Baps*
£5.50

Healthy Living Break
*Freshly Brewed Tea or Coffee and a
 selection of Fresh Fruit Skewers*
£4.50

All prices are per person



Dining Room

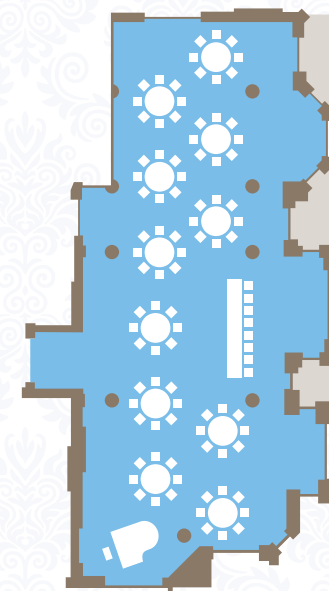
The largest reception room, comfortably seating up to 300 theatre style for a conference or presentation.

Guests have a beautiful vista over the lawned gardens to The Leas, English Channel and the French coast on clear days.

It has graceful proportions: a high ceiling and a spacious, airy feel.

Its appearance definitely has the “wow” factor and has proved to be a most popular choice for many different purposes.

Superb acoustics and our talented in-house pianist will lift your presentation or exhibition to the next level.



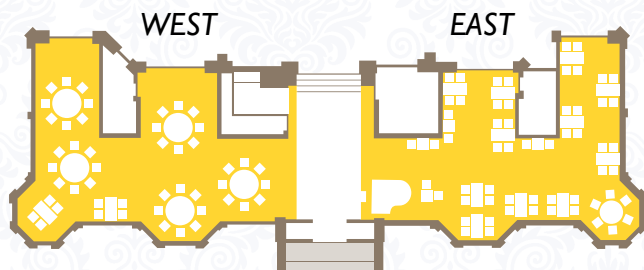


Palm Court

The Palm Court faces directly over The Leas and sea, and is open 365 days a year for refreshments and meals.

What could be a better place for your arriving delegates to gather? Either the East or the West side can be booked in total.

This unrivalled space overlooking 'the finest marine promenade in the world' can accommodate up to 60 at tables or 100 for receptions in either half.

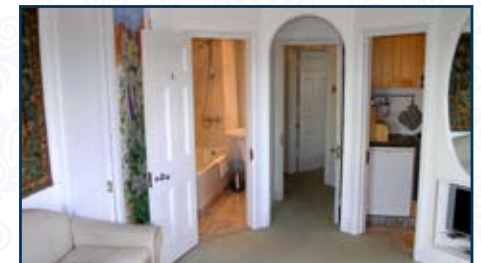


Accommodation

At the end of your day relax in comfortable surroundings. Each suite is unique and tastefully decorated.

A room at The Grand includes

- En Suite Bathroom
- Freeview TV
- Direct Dial Telephone
- Iron and Ironing Board
- Tea and Coffee making facilities
- Work Desk and Chair
- Access to Hotel Safe
- The best views of the English Channel for miles



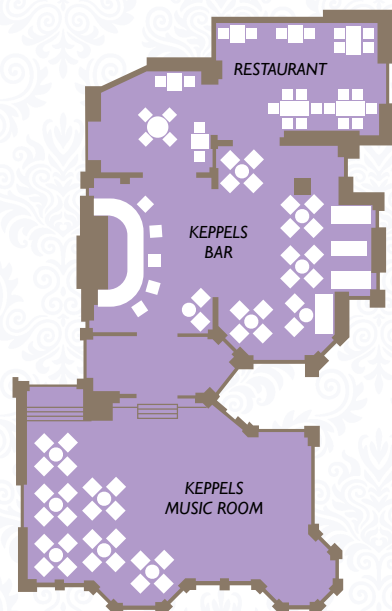
For more details on accommodation available at The Grand call Reception on 01303 222 222.



Keppels

Keppels Wine Bar and Music Room are a tremendous evening entertainment venue to relax in following your conference. For meals it is suitable for up to 80, for theatre style seating up to 100, and receptions up to 150.

The Music Room is alongside Keppels Wine Bar & Bistro which is open 11am – 11pm daily.

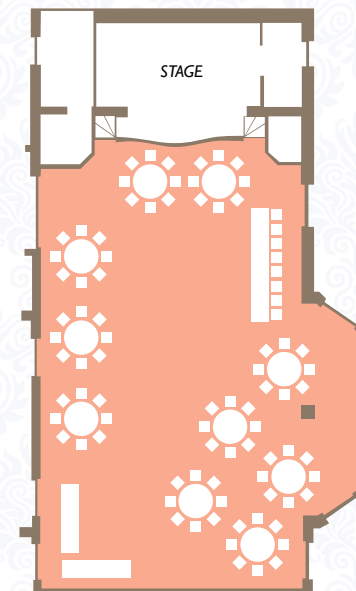


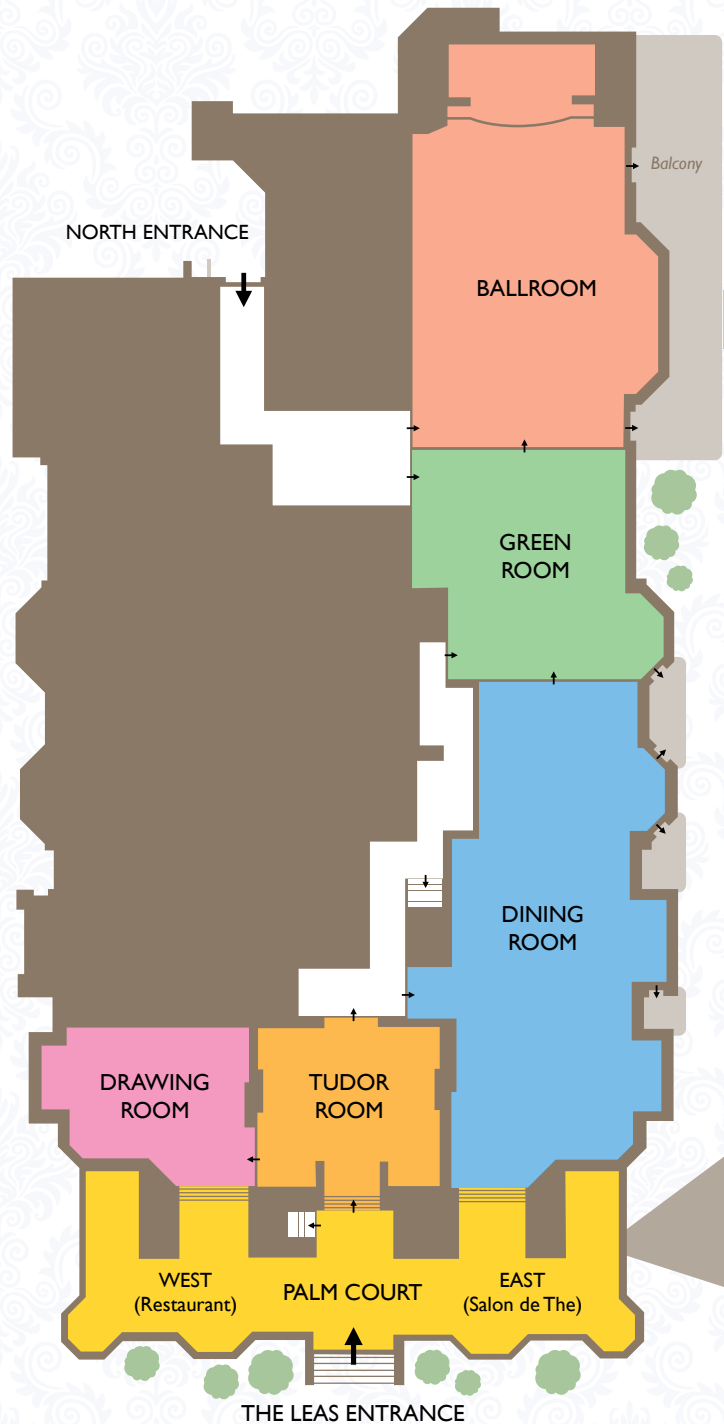
Ballroom

The ballroom was opened by King Edward VII in 1909 – he took the first dance with The Queen and the second with Alice Keppel, his intimate friend in residence!

For dining we can accommodate up to 200; for theatre style up to 400, and for receptions up to 500. About 80 years ago the ballroom was styled in period Art Deco and this theme has been continued in subsequent refurbishments.

The ballroom has splendid sea views especially from its private balcony, and access from the gardens at the rear of The Grand. Historically the Ballroom has accommodated film sets, as well as the more usual exhibition and conferences equipment. The stage is regularly used for theatre productions.





Capacity

Room size Sq. ft (sq.m)
 Banquet: min-max dining
 Theatre: max seating
 Reception: max standing

Typical dimension feet (m)

Length
 Width
 Height

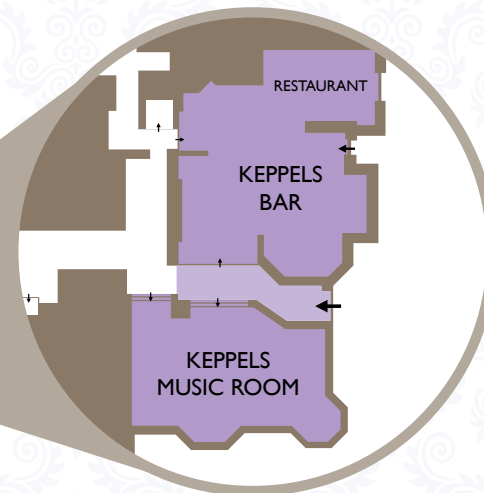
Access

Max door openings inches (m)
 Width
 Height
 Diagonal
 Level Access

Other

Audio Visual
 Telephone/Fax points
 WiFi
 Stage (fixed)
 Stage (mobile)
 Open fire (free of charge)

Music Room	Palm Court (East or West)	Drawing Room	Dining Room	Green Room	Ballroom
1000 (95)	800 (75)	1000 (95)	3500 (326)	1600 (150)	2600 (240)
10-80	10-60	10-80	50-300	30-80	70-200
100	-	100	300	190	400
150	100	150	500	250	500
40 (12.2)	40 (12.2)	35 (17)	90 (27.5)	40 (12.2)	60 (18.3)
25 (7.6)	25 (7.6)	25 (7.6)	35 (17)	38 (11.6)	38 (11.6)
9 (2.7)	11 (3.6)	15 (4.6)	15 (4.6)	15 (4.6)	14 (4.3)
57 (1.44)	75 (1.9)	66 (1.67)	75 (1.9)	75 (1.9)	100 (2.54)
80 (2.08)	90 (2.28)	86 (2.18)	100 (2.54)	100 (2.54)	100 (2.54)
97 (2.46)	120 (3.05)	107 (2.71)	120 (3.05)	120 (3.05)	140 (3.55)
N	N	Y	Y	Y	Y
Y	Y	Y	Y	Y	Y
3	2	-	4	3	8
Y	Y	Y	Y	Y	Y
-	-	-	-	-	Y
Y	Y	Y	Y	Y	Y
-	-	Y	-	-	-



 **Wheelchair access**
 Ring Reception for assistance